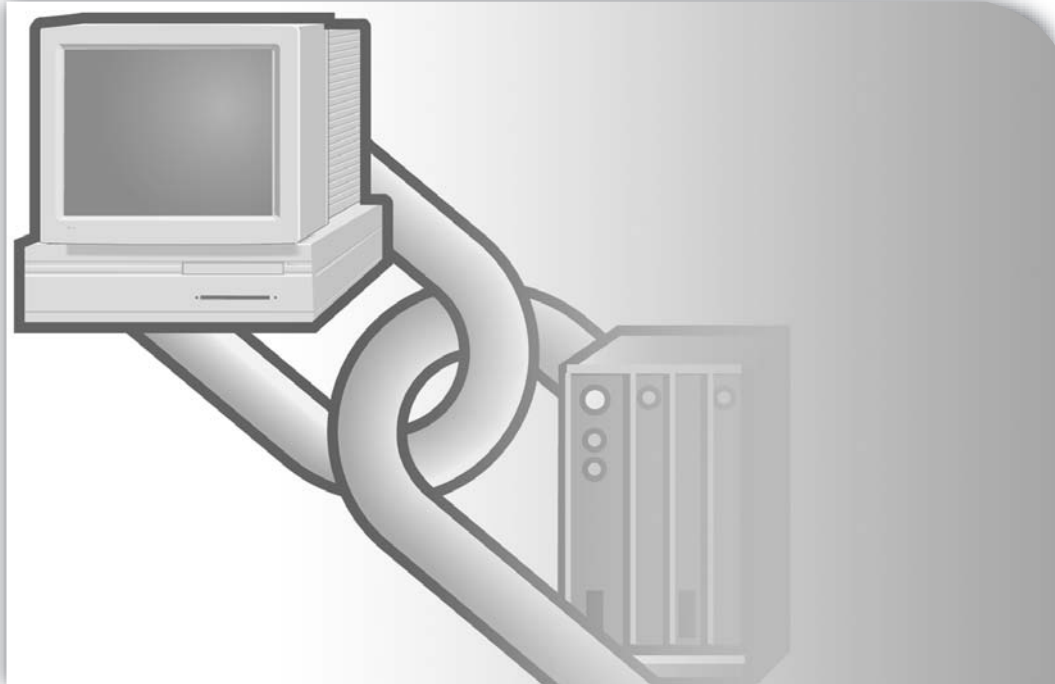


LISTEN.  
THINK.  
SOLVE.®

# ***RS**Linx® Classic*



## **GETTING RESULTS GUIDE**

PUBLICATION LINX-GR001F-EN-E–July 2008

Supersedes Publication LINX-GR001E-EN-E

ALLEN-BRADLEY • ROCKWELL SOFTWARE

**Rockwell  
Automation**

<b>Contact Rockwell</b>	Customer Support Telephone — 1.440.646.3434 Online Support — <a href="http://support.rockwellautomation.com/">http://support.rockwellautomation.com/</a>
<b>Copyright Notice</b>	© 2008 Rockwell Automation Technologies, Inc. All rights reserved. Printed in USA.  This document and any accompanying Rockwell Software products are copyrighted by Rockwell Automation Technologies, Inc. Any reproduction and/or distribution without prior written consent from Rockwell Automation Technologies, Inc. is strictly prohibited. Please refer to the license agreement for details.
<b>Trademark Notices</b>	Allen-Bradley, ControlLogix, FactoryTalk, PLC-2, PLC-3, PLC-5, Rockwell Automation, Rockwell Software, RSLinx, RSView, and the Rockwell Software logo are registered trademarks of Rockwell Automation, Inc.  The following logos and products are trademarks of Rockwell Automation, Inc.:  RSLinx, Data Highway Plus, DH+, RSView, FactoryTalk View, RSView Studio, FactoryTalk View Studio, RSView Machine Edition, FactoryTalk View ME, RSView Supervisory Edition, FactoryTalk View SE, RSView32, WINTelligent, FactoryTalk Activation, FactoryTalk Administration Console, FactoryTalk Alarms and Events, FactoryTalk Automation Platform, FactoryTalk Services Platform, FactoryTalk Directory, FactoryTalk Live Data, RSAssetSecurity, FactoryTalk Security, RSSql, FactoryTalk Transaction Manager, MicroLogix, RSLinx Classic, RSLinx Enterprise, RSNetWorx, RSNetWorx for ControlNet, RSNetWorx for DeviceNet, RSNetWorx for EtherNet, RSNetWorx for EtherNet/IP, SLC 5, RSLadder, and RSTrend.
<b>Other Trademarks</b>	ActiveX, Microsoft, Microsoft Access, SQL Server, Visual Basic, Visual C++, Visual SourceSafe, Windows, Windows ME, Windows NT, Windows 2000, Windows Server 2003, Windows XP, and Windows Vista are either registered trademarks or trademarks of Microsoft Corporation in the United States and/or other countries.  Adobe, Acrobat, and Reader are either registered trademarks or trademarks of Adobe Systems Incorporated in the United States and/or other countries.  ControlNet is a registered trademark of ControlNet International.  DeviceNet is a trademark of the Open DeviceNet Vendor Association, Inc. (ODVA).  Ethernet is a registered trademark of Digital Equipment Corporation, Intel, and Xerox Corporation.  OLE for Process Control (OPC) is a registered trademark of the OPC Foundation.  Oracle, SQL*Net, and SQL*Plus are registered trademarks of Oracle Corporation.  All other trademarks are the property of their respective holders and are hereby acknowledged.
<b>Warranty</b>	This product is warranted in accordance with the product license. The product's performance may be affected by system configuration, the application being performed, operator control, maintenance and other related factors. Rockwell Automation is not responsible for these intervening factors. The instructions in this document do not cover all the details or variations in the equipment, procedure, or process described, nor do they provide directions for meeting every possible contingency during installation, operation, or maintenance. This product's implementation may vary among users.  This document is current as of the time of release of the product; however, the accompanying software may have changed since the release. Rockwell Automation, Inc. reserves the right to change any information contained in this document or the software at anytime without prior notice. It is your responsibility to obtain the most current information available from Rockwell when installing or using this product.

Version: 2.54

# Contents

<b>Introduction</b>	<b>1</b>
Purpose of the document	1
Intended audience	1
How does the getting results guide fit in with other Rockwell Software product documentation?	1
Online help	1
Document conventions	2
Feedback	2
 <b>1 • Welcome to RSLinx Classic</b>	 <b>3</b>
What is RSLinx Classic?	3
Differences between RSLinx Classic types	3
RSLinx Classic Lite	4
RSLinx Classic Single Node	4
RSLinx Classic OEM	4
RSLinx Classic Gateway	5
RSLinx Classic for FactoryTalk View	5
Quick start	6
Step 1 – Configure a driver	6
Step 2 – Configure a topic	7
Step 3 – Copy a link to the clipboard	8
Step 4 – Paste a link from the clipboard	9
Exploring RSLinx Classic	10
Title bar	10
Menu bar	11
Toolbar	12
Application workspace	13
Status bar	13

<b>2 • Installing and Starting RSLinx Classic</b>	<b>15</b>
Before you begin .....	15
System requirements .....	15
Hardware requirements .....	16
Software requirements .....	16
Installing RSLinx Classic software .....	16
Updating an existing installation .....	17
Starting RSLinx Classic software .....	18
Troubleshooting installation .....	18
<b>3 • RSWho</b>	<b>19</b>
Using RSWho .....	19
RSWho browsing .....	20
<b>4 • OPC and DDE Connectivity</b>	<b>21</b>
OLE for Process Control (OPC) .....	21
Dynamic Data Exchange (DDE) .....	22
DDE/OPC client connectivity .....	23
<b>5 • Finding the Information You Need</b>	<b>25</b>
Using the online help .....	25
Accessing help for a control or field .....	26
Finding step-by-step procedures .....	27
Finding definitions .....	28
Accessing online guides .....	29
Training .....	29
Technical support .....	29
When you call .....	30

<b>A • Activation</b>	<b>31</b>
Grace period . . . . .	31
Activate RSLinx Classic with FactoryTalk Activation . . . . .	31
How to activate RSLinx Classic . . . . .	32
Finding more information about FactoryTalk Activation . . . . .	32
Activate RSLinx Classic with EVRSI . . . . .	33
How to activate RSLinx Classic . . . . .	33
Protecting your activation files . . . . .	34
Running the activation utilities . . . . .	35
Some common questions . . . . .	35
My activation files were damaged. What should I do? . . . . .	35
I accidentally deleted the software directory on my hard drive. Do I need to call Rockwell Software for replacement activation files? . . . . .	35
Why can't I move activation to a new floppy disk on a Windows NT system? . . . . .	36
Finding more information about activation . . . . .	36
<b>B • Secure RSLinx Classic with FactoryTalk Security</b>	<b>37</b>
How do I set up security in RSLinx Classic? . . . . .	37
What can I secure in RSLinx Classic? . . . . .	43
Considerations when using RSLinx Classic with FactoryTalk Security . . . . .	44
Network/Local Directory . . . . .	44
Reset Network Tree . . . . .	45
Miscellaneous . . . . .	45
<b>Glossary</b>	<b>47</b>
<b>Index</b>	<b>49</b>



# Introduction

## Purpose of the document

The *Getting Results with RSLinx Classic™* guide provides you with information on how to install and navigate the RSLinx Classic software. It explains how to access and navigate the online help, and how to effectively use the RSLinx Classic software.

## Intended audience

We assume that you are familiar with:

- IBM-compliant personal computers
- Microsoft® Windows® operating systems
- OLE for Process Control® (OPC) communication
- Microsoft dynamic data exchange (DDE) messaging
- Allen-Bradley programmable logic controllers (PLC™)
- Rockwell Software's PLC programming tools

## How does the getting results guide fit in with other Rockwell Software product documentation?

This getting results guide can be considered the entry point into Rockwell Software's documentation set for this product. The documentation set contains pertinent, easily accessible product information and ships with the software product. This set ships with the software product, and is designed to free you from tedious paper shuffling and reduce information overload.

Other components of the documentation set include electronic release notes and online help.

## Online help

The online help includes all overview, procedural, screen, and reference information for the product. The help contains these basic components: overview topics, quick start topics, step-by-step procedures, and screen element descriptions (for example, text boxes, drop-down lists, and option buttons). All of the help is context-sensitive with the application and provides you with immediate access to application tasks and screen element descriptions. Refer to the "Finding the information you need" chapter in this guide for a more detailed description of the online help.

*Note: This getting results guide, as well as any reference guides, are included in a portable document format (PDF) on your RSLinx Classic CD. These files must be viewed using the Adobe Acrobat Reader software, which you can download for free from the Adobe website ([www.adobe.com](http://www.adobe.com)).*

## **Document conventions**

The conventions used throughout this document for the user interface comply with those recommended by Microsoft. If you are not familiar with the Microsoft Windows user interface, we recommend that you read the documentation supplied with the operating system you are using before attempting to use this software.

## **Feedback**

Please use the feedback form packaged with your software to report errors or let us know what information you would like to see added in future editions of this document. You can also send an email message to [info@software.rockwell.com](mailto:info@software.rockwell.com) with any comments about Rockwell's products and services.





# Welcome to RSLinx Classic

This chapter includes the following information:

- What is RSLinx Classic?
- Differences between RSLinx Classic types
- Quick start
- Exploring RSLinx Classic

## What is RSLinx Classic?

RSLinx Classic for Rockwell Automation Networks and Devices is a comprehensive factory communications solution for use with the following operating systems:

- Microsoft Windows XP, XP SP1, or XP SP2
  - Microsoft Windows Server 2003 SP1 or R2
  - Microsoft Windows 2000 SP4
  - Microsoft Windows Vista Business (32-bit) and Vista Home Basic (32-bit)
- It provides Allen-Bradley programmable controller access to a wide variety of Rockwell Software and Allen-Bradley applications. These range from device programming and configuration applications such as RSLogix and RSNetWorx, to HMI (Human-Machine Interface) applications such as RSView32, to your own data acquisition applications using Microsoft Office, web pages, or Visual Basic®. RSLinx Classic also incorporates advanced data optimization techniques and contains a set of diagnostics. The Application Programming Interface (API) supports custom applications developed with the RSLinx Classic SDK. RSLinx Classic is an OPC Data Access Compliant Server and a DDE server.

## Differences between RSLinx Classic types

RSLinx Classic is available in five versions to meet the demand for a variety of cost and functionality requirements. Depending on the version you are running, some functionality may or may not be operational. Refer to the following sections for specific version functionality.

The RSLinx Classic version you are running appears in the title bar at the top of the main window. If a version of RSLinx Classic is started without the proper activation files, it runs as RSLinx Classic Lite.

## **RSLinx Classic Lite**

RSLinx Classic Lite provides the minimum functionality required to support RSLogix and RSNetWorx. This version is not commercially available, but is bundled with products that require only direct access to the RSLinx Classic network drivers. This version does not support OPC, DDE, or the published RSLinx Classic C Application Programming Interface (API).

RSLinx Classic Lite is used for the following:

- Ladder logic programming using RSLogix products.
- Network and device configuration and diagnostics using RSNetWorx.
- Configuring Ethernet modules/devices (for example, 1756-ENET, 1756-DHRIO, and so on).
- Upgrading firmware using ControlFlash.
- Browsing networks and getting device information such as firmware revision.

## **RSLinx Classic Single Node**

RSLinx Classic Single Node includes the required functionality to supply communications services for all Rockwell Software products. OPC and DDE interfaces are supported, but to only one device. It does not support applications developed for the RSLinx Classic C Application Programming Interface (API) or direct drivers in HMI applications. RSLinx Classic OEM or higher is required for these application types.

RSLinx Classic Single Node is used for the following:

- Data acquisition using OPC or DDE to only one device. This includes clients such as RSView32, Microsoft Office, Visual Basic, and web pages.
- Ladder logic programming using RSLogix products.
- Network and device configuration and diagnostics using RSNetWorx.
- Configuring Ethernet modules/devices (for example, 1756-ENET, 1756-DHRIO, and so on).
- Upgrading firmware using ControlFlash.
- Browsing networks and getting device information such as firmware revision.

## **RSLinx Classic OEM**

RSLinx Classic OEM includes the required functionality to supply communications services for all Rockwell Software products. OPC and DDE clients are supported for any number of devices. It also supports applications developed for the RSLinx Classic C Application Programming Interface (API).

RSLinx OEM Versions 2.2 and previous versions only supported AdvanceDDE. RSLinx Version 2.3 and subsequent versions support all DDE types except FastDDE.

RSLinx Classic OEM is used for the following:

- Data acquisition using OPC or DDE to any number of devices. This includes clients such as RSView32, Microsoft Office, Visual Basic, and web pages.
- Ladder logic programming using RSLogix products.
- Network and device configuration and diagnostics using RSNetWorx.
- Configuring Ethernet modules/devices (for example, 1756-ENET, 1756-DHRIO, and so on).
- Upgrading firmware using ControlFlash.
- Browsing networks and getting device information such as firmware revision.

## RSLinx Classic Gateway

RSLinx Classic Gateway extends RSLinx Classic-based communications throughout the enterprise by connecting clients over TCP/IP networks. Programming and configuration products such as RSLogix and RSNetWorx use a local RSLinx Classic Lite or better with a Remote Devices via Linx Gateway driver configured to communicate to the RSLinx Classic Gateway. Remote HMIs and VB/VBA applications including Microsoft Office can use remote OPC to communicate to RSLinx Classic Gateway for data collection. This allows you to have multiple distributed computers performing data collection without having RSLinx Classic installed on each machine!

In addition to the capabilities provided in the RSLinx Classic Professional version, RSLinx Classic Gateway offers remote connectivity to:

- Multiple RSView32 clients accessing data through one RSLinx Classic Gateway (remote OPC).
- Remote PC running RSLogix connecting to a plant network over a modem for online program changes.
- Remote Microsoft Office applications displaying plant floor data such as Excel.
- A web page displaying plant floor data when the web server and RSLinx Classic are on separate computers.

## RSLinx Classic for FactoryTalk View

If RSLinx Classic Lite (no activation present) is installed on a machine that has FactoryTalk View SE/ME, it uses FactoryTalk View's license to start as RSLinx Classic for FactoryTalk View. However, please keep in mind that RSLinx Classic for FactoryTalk View:

- In addition to supporting FactoryTalk View SE/ME as OPC clients, supports RSLadder 5/500 and Data Monitor.
- Does not support RSView32, FactoryTalk Transaction Manager, RSTrend, WinView, RSLogix 5/500/5000 and third-party OPC clients.

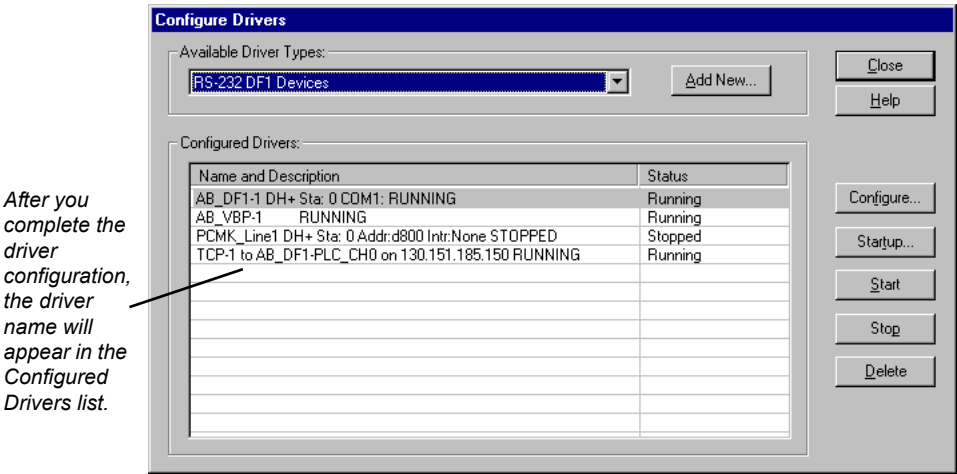
*Note: In RSLinx Classic v2.53 and later, RSLinx Lite enables OPC connectivity for FactoryTalk View SE/ME.*

## Quick start

This section outlines the main tasks you will need to perform to use the RSLinx Classic software. The quick start information included in this section is intended to be a high-level, conceptual overview. When you are ready to use RSLinx Classic software, follow the detailed procedures found in the Quick Start, which is located in the RSLinx Classic online help. To access the online Quick Start, select **Help > Quick Start** from within RSLinx Classic. For information about specific controls on RSLinx Classic windows and dialog boxes, right-click any control.

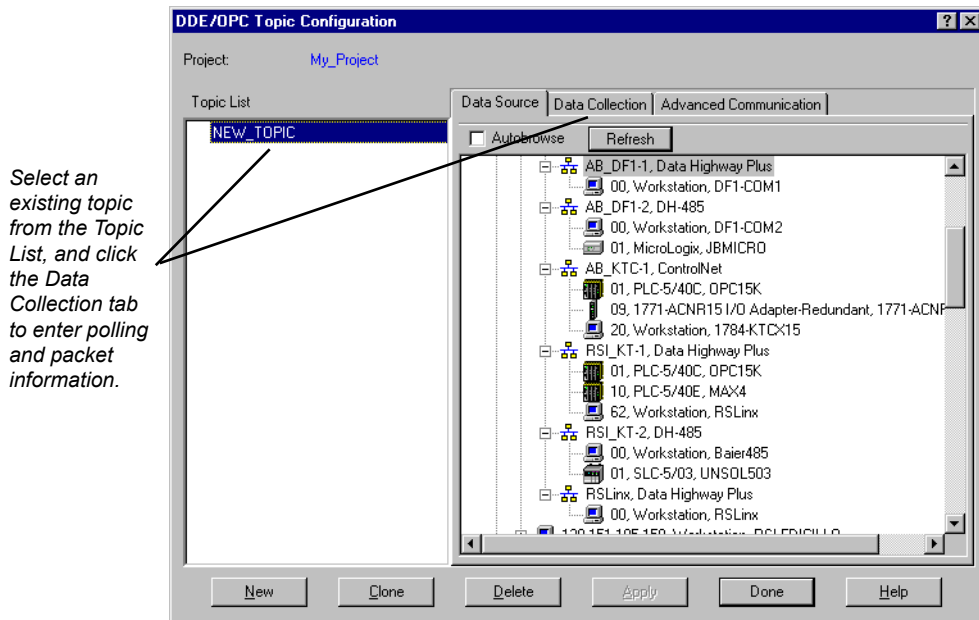
### Step 1 – Configure a driver

A driver is the software interface to the hardware device that will be used to communicate between RSLinx Classic and your processor. To configure a driver in RSLinx Classic, select **Communications > Configure Drivers**. The Configure Drivers dialog box appears, which is used for adding, editing, or deleting drivers. Select a driver to configure from the Available Driver Types list, click **Add New**, and complete the information required in the driver configuration dialog box that displays. The driver configuration dialog box varies depending on which driver you select.



## Step 2 – Configure a topic

In RSLinx Classic, a project is a storage container for one or more topics, and a topic represents a specific path to a processor. By grouping topics together in a project, you can make multiple topics available at the same time. Projects are created and edited in RSLinx Classic via the Open Project window, and topics are created and edited via the DDE/OPC Topic Configuration window. If you attempt to create a topic without creating a project, a default project is created for you.



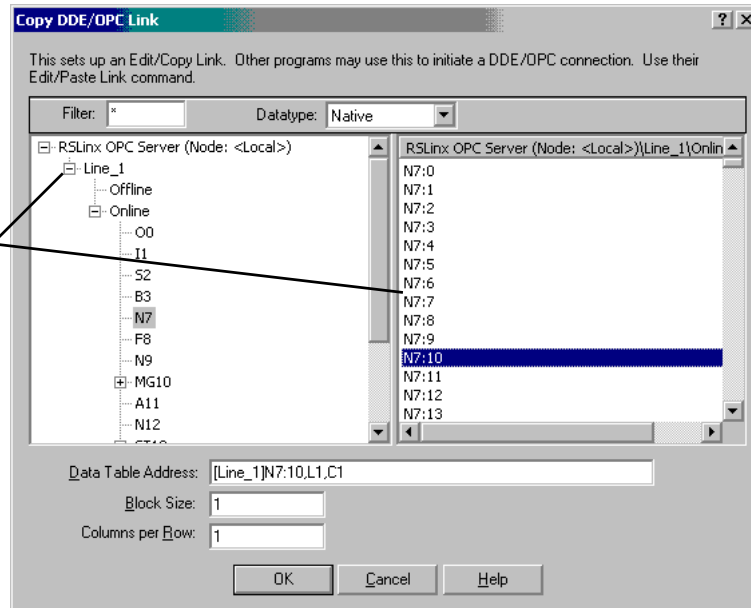
If you selected Configure New DDE/OPC Topic by right-clicking a station in RSWho, the Topic Name field is pre-filled for you. RSLinx Classic starts with the name of the program running in the processor, and if this topic exists, it adds a number to the end until it finds one that does not exist. If there are any spaces, it converts them to underscores (\_). You can change the topic name RSLinx Classic selected for you.

From the Data Source tab, select the device with which you wish to set up communication. To add a new topic to a project that already has at least one topic configured, click **New**. To edit an existing topic, select the topic from the list. Use the Data Collection tab to include more detailed information about specific topics.

### Step 3 – Copy a link to the clipboard

RSLink Classic provides a mechanism for easily establishing a link from RSLink Classic to a compatible program. It takes the information needed to create a link and places it on the Windows clipboard. Some packages support the ability to paste links from the clipboard. The Copy to Clipboard function can be used with these applications only.

Select the topic you just added in the DDE/OPC Topic Configuration dialog box, and browse for the address string for your request.



The Copy to Clipboard function only establishes hot links from RSLink Classic, the DDE server, to a Windows DDE client application. The Data Table Address, Block Size, Columns per Row, and selected topic are maintained from the last time that you used this function. Changing these values will have no effect on the last established link.

To use the Copy to Clipboard function, you must choose an RSLink Classic project, and the selected project must contain topics.



## Step 4 – Paste a link from the clipboard

Most Windows applications support a Paste Link operation, and this feature is generally located in the Edit menu.

Go to your application program that supports the Paste Link function. For example, in Microsoft Excel, click an open cell in a spreadsheet where you would like to place the data, select **Edit > Paste Special**, select Paste Link, and click **OK**. The hot link is pasted into the spreadsheet at the location you selected and begins to update. Note that if you select Paste, instead of Paste Link, the item string will get copied.

## Exploring RSLinx Classic

When you start RSLinx Classic, the Rockwell Software RSLinx Classic application window appears. The application window contains a title bar, a menu bar, a tool bar, the application workspace where opened child windows (RSWho, diagnostics, and so on) are displayed, and a status bar.

### Title bar

The title bar shows the RSLinx Classic icon, the name of the software product (for example, Rockwell Software RSLinx Classic Gateway), the RSWho instance number (RSWho - 1 opens by default when you open RSLinx Classic), and the Minimize, Maximize, and Close button.



To view the Control Menu, click the RSLinx Classic icon on the title bar. The following items appear on the Control Menu.

Item	Description
Restore	Restores the window to its former size after you enlarged it by using the Maximize command or shrunk it by using the Minimize command.
Move	Allows you to reposition the window on the desktop using the arrow keys on the keyboard.
Size	Allows you to resize the window by using the arrow keys on the keyboard.
Minimize	Shrinks the window to an icon, which is located on the task bar. This performs the same function as if you clicked the Minimize button on the title bar.
Maximize	Enlarges the window to occupy the entire screen. This performs the same function as if you clicked the Maximize button on the title bar.
Close	Exits the RSLinx Classic application. This performs the same function as if you clicked the Close button on the title bar.



## Menu bar

The RSLinx Classic menu bar contains the following menus:










Each menu contains options for performing the following tasks:

Menu	Description
File	Create and open RSLinx Classic projects.
Edit	Copy DDE and OPC links to the clipboard.
View	Set and change RSLinx Classic interface displays, open the Event Viewer, and select the RSWho view.
Communications	Configure drivers, topics, and other RSLinx Classic options, and view driver, DDE, other client application diagnostics.
Station	Perform actions on diagnostic counters and view the Data Monitor.
DDE/OPC	Configure DDE/OPC topics and view event and diagnostic information.
Security	Set security user and access rights.
Window	Arrange RSLinx Classic windows.
Help	View help options for RSLinx Classic and other Rockwell Software products and services.

## Toolbar

The toolbar contains shortcuts to several commonly used RSLinx Classic functions. Each toolbar button is a graphical representation of a command that is also available from the RSLinx Classic menu bar. The following items appear on the RSLinx Classic toolbar.



Icon	Menu Selection	Description
	<b>File &gt; Open Project</b>	Displays the currently defined projects and allows you to open a DDE/OPC project.
	<b>Communications &gt; RSWho</b>	Opens an additional instance of RSWho (one instance is opened by default each time you open RSLinx Classic).
	<b>Communications &gt; Configure Drivers</b>	Displays the currently configured RSLinx Classic software drivers and allows you to add additional drivers for use with your hardware devices.
	<b>Communications &gt; Driver Diagnostics</b>	Displays a list of currently configured drivers and provides the option to view diagnostic information for each driver.
	<b>Edit &gt; Copy DDE/OPC Link</b>	Provides the ability to create a DDE/OPC link between RSLinx Classic and a client application such as Microsoft Excel.
	<b>DDE/OPC &gt; Topic Configuration</b>	Allows you to create and modify a DDE/OPC topic, which is a specific path to a processor.
	<b>Help &gt; What's This?</b>	Changes the cursor to an arrow and a question mark to indicate you are in What's This? help mode. Click any screen item to display help text for that item and to exit What's This? help mode.



## Application workspace

The application workspace displays open child windows, such as the RSWho and RSLinx Classic dialog boxes.

## Status bar

The status bar at the bottom of the RSLinx Classic screen provides information about the current status of your system.



The left area of the status bar is used to pass messages to the user. For example, when you scroll through the items on the menus, a brief description of the function of that menu item appears in this area of the status bar.

The right area of the status bar displays:

- CAP, which is highlighted if the Caps Lock key on your keyboard is toggled for all caps.
- NUM, which is highlighted if the Num Lock key on your keyboard is set to enable the numeric keypad on your keyboard.
- SCRL, which is highlighted if the Scroll Lock key on your keyboard is set.
- The current date from your computer's system clock/calendar.
- The current time from your computer's system clock/calendar.



# 2

## Installing and Starting RSLinx Classic

This chapter explains how to install and start RSLinx Classic software. This chapter includes information on the following:

- system requirements
- installation procedure
- updating an existing installation
- starting procedure
- troubleshooting installation

After installing the software, we recommend that you read the release notes located in the online help. The release notes may contain more up-to-date information than was available when this document was published. To view the release notes, start RSLinx Classic, and then choose **Help > Release Notes** from the main menu.

### Before you begin

Rockwell Software uses a software key to implement copy protection for Windows-based software products. Every software product has a unique key. Although, you can install the software on any number of computers, you are only licensed to run the software on one computer at a time. After you install the RSLinx Classic software, the Setup program will prompt you to activate your software. For more information about moving software keys, copy protection, and software activation, refer to Appendix A in this guide.

### System requirements

To effectively use RSLinx Classic, your personal computer must meet the following minimum hardware and software requirements:

#### Hardware requirements

To install RSLinx Classic software, you will need the following hardware:

- a Pentium 100MHz processor with at least 32 Megabytes (MB) of RAM. This version of RSLinx Classic will not run on Alpha, MIPS, or Power PC processors.
- at least 35 MB of available hard drive space; more hard disk space may be required for specific application features.
- a 16-color, SVGA display with 800 by 600 or greater resolution.
- a mouse or other Windows-compatible pointing device.
- an Ethernet card and/or Allen-Bradley communications device or cable.

Software requirements

To run RSLinx Classic, you require Microsoft Internet Explorer 6.0 (or later), and one of the following operating systems:

- Microsoft Windows XP, XP SP1, and XP SP2.
- Microsoft Windows 2003 SP1 or R2.
- Microsoft Windows 2000 SP4.
- Microsoft Windows Vista Business [32-bit] or Microsoft Windows Vista Home Basic [32-bit]

*Note: Microsoft Windows Vista Business [32-bit] (Service Pack 1) or Microsoft Windows Vista Home Basic [32-bit] (Service Pack 1) is only required if you are also installing the FactoryTalk Services Platform. If you are not installing FactoryTalk Services Platform, RSLinx Classic will run on Microsoft Windows Vista Business [32-bit] or Microsoft Windows Vista Home Basic [32-bit].*

Installing RSLinx Classic software

You can install one or more Rockwell Software products to a single personal computer.

*Note: While installing RSLinx Classic software, you will have the opportunity to specify a directory. The suggested and recommended default directory is x:\Program Files\Rockwell Software\RSLinx where x is the letter of the drive to which you are installing RSLinx Classic. In procedures that appear throughout this document, it is assumed that you used the default name. If not, substitute the actual name you specified for the default name shown.*

*Note: To install RSLinx Classic, you must logon to your computer as an Administrator.*

To install RSLinx Classic software, perform the following steps:

1. Start your Windows operating system if it does not start automatically.
2. Insert the RSLinx Classic CD-ROM into the CD-ROM drive.

If autorun is: Then:

enabled	The Setup program starts automatically and the RSLinx Classic opening screen appears. Proceed to step 3.
disabled	Perform the following steps: <ol style="list-style-type: none"><li>1. Click <b>Start</b>, and then click <b>Run</b>. The Run dialog box appears.</li><li>2. In the Open control, type x:\setup, where x is the letter of the drive containing the RSLinx Classic CD-ROM, and click <b>OK</b>. The RSLinx Classic opening screen appears.</li></ol>

3. Follow the instructions that appear on the screen.

- **On the RSLinx Classic installation dialog box** Click **Release Notes** to ensure your system meets the minimum requirements and to learn about new features included with this version of RSLinx Classic. After you have read the Release Notes, click **Install RSLinx Classic**.

- **On the Welcome dialog box** Read the RSLinx Classic introductory information, and then click **Next**.
- **On the Software License Agreement dialog box** Read the entire Software License Agreement. Enable **I accept the terms in the license agreement** and click **Next** to accept and continue installation, or enable **I do not accept the terms in the license agreement** and click **Next** to decline and exit the installation.
- **On the Customer Registration Information dialog box** Type your user name, the name of your organization, and the serial number of your RSLinx Classic software, and then click **Next**.

*Note: You can find the serial number on the product box label or the CD-ROM case.*

- **On the Standard Setup dialog box** Select the RSLinx Classic options you wish to install. You have options such as selecting a destination directory other than the default location, and selecting specific EDS files. Click **Next**.
  - **On the Ready to Install the Program dialog box** Click **Install** to start the RSLinx Classic installation process.
  - **On the InstallShield Wizard Complete dialog box** Specify if you wish to install activation and click **Finish**. (For information on activation, refer to Appendix A in this guide). RSLinx Classic reverts to the Lite version if the proper activation is not installed. You must restart your computer before using RSLinx Classic. The RSLinx Classic installation is complete.
4. When you are finished installing the software, remove the RSLinx Classic CD-ROM from the CD-ROM drive and the Master disk from the disk drive. Store them in a safe place.

## Updating an existing installation

Perform the following steps to update an existing RSLinx Classic installation:

1. Insert the RSLinx Classic CD-ROM into the CD-ROM drive and click **Next** on the Welcome dialog box.
2. On the Program Maintenance dialog box, enable **Remove** to remove RSLinx Classic from your computer.
3. Click **Yes**, and then **Backup** to backup your drivers and topics. Click **Close** to close the Backup/Restore dialog box.
4. Click **Yes** to remove EDS files from your computer.
5. At the Remove the Program dialog box, click **Remove** to confirm the uninstall procedure.
6. After the uninstall procedure is complete, click **Finish**.

7. Refer to the “Installing RSLinx Classic Software” section to install the updated version of RSLinx Classic. To restore the drivers and topics you backed up in step 3, click Start, and then select **Programs > Rockwell Software > RSLinx > RSLinx Classic Backup Restore Utility**.

*Note: If activation was previously installed, it is not necessary to move the activation. If activation was not previously installed, insert the Master disk into the 3.5-inch disk drive and follow the instructions that appear on the screen. For more information on activation, refer to Appendix A in this guide.*

## Starting RSLinx Classic software

To start RSLinx Classic software, click Start, and then select **Programs > Rockwell Software > RSLinx > RSLinx Classic**.

*Note: We assume that you used the default names for the directory and program group. If you did not use the default names, substitute the actual names that you specified for the default names shown.*

## Troubleshooting installation

If RSLinx Classic does not start or run properly, consider the following:

- Does your computer have enough memory? Running RSLinx Classic requires a minimum of 32 MB of RAM.
- Does your computer have enough disk space? Running RSLinx Classic requires a minimum of 35 MB of available hard disk space.
- Do you have the correct version of RSLinx Classic installed? If your RSLinx Classic installation displays as RSLinx Classic Lite, RSLinx Classic Single Node, or RSLinx Classic OEM, the proper activation files were not installed. From within RSLinx Classic, select **Help > Copy Protection** to view information about activation files.
- Have you reinstalled an earlier Service Pack or removed a component, such as DCOM, that RSLinx Classic requires?



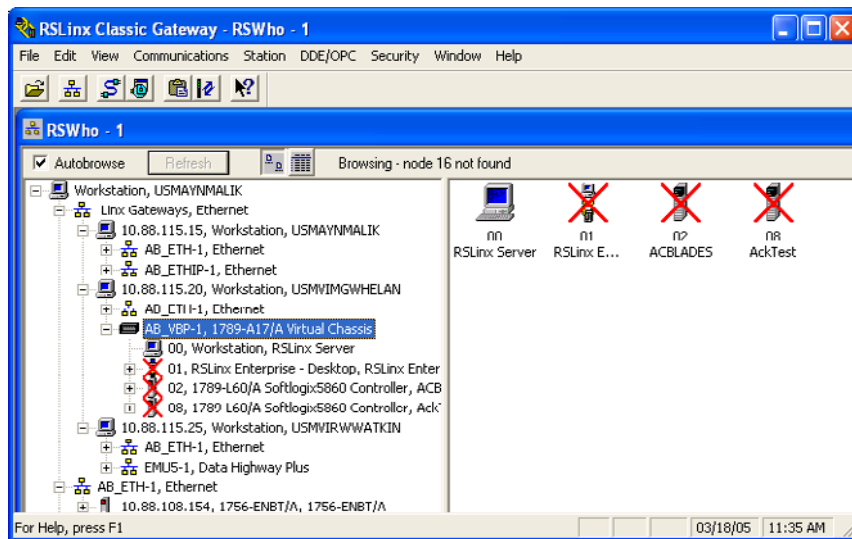
# 3

## RSWho

This chapter describes features of the RSWho network browser interface. RSWho allows you to view all the active network connections from a single screen.

### Using RSWho

RSWho is RSLinx Classic's main window that displays networks and devices in a style similar to Windows Explorer. A variety of integrated configuration and monitoring tools are accessible from the right mouse button in RSWho. Some of the available tools are the ControlLogix Gateway Configuration Tool for Controlnet, DeviceNet, Ethernet, 1756-DHRIO, and 1756-DH485 modules, a Ladder Viewer for PLC-5, SLC, or MicroLogix family processors, and a Data Monitor for monitoring live data out of any ControlLogix, PLC-5, SLC, or MicroLogix family controllers.



The left pane of RSWho is the tree control, which shows networks and devices. The right pane is the list control, which shows all members of a collection. A collection is a network, or a device that is a bridge. Right-click in the list control and choose a view option of Large Icons or Details.

*Note: A device that appears with a red X indicates that RSWho previously recognized this device, but now it can not. The red X indicates a communication status error, such as unplugging a recognized device. These devices can be removed from the RSWho display by right-clicking the device and selecting Remove.*

## RSWho browsing



The RSWho icon indicates a network. If this icon is animated, the network is being browsed. Click a network or device to start browsing.

When the network or device is collapsed (indicated by the + sign), click + or double-click the network or device icon next to the + to expand the view and begin browsing. When the network or device is expanded (indicated by the – sign), click – or double-click the network or device icon next to the – to collapse the view.

If the Autobrowse checkbox is enabled, RSWho continuously browses the selected device or network (regardless of whether or not the selection is expanded or collapsed). If Autobrowse is cleared, the Refresh button is active. Clicking Refresh instructs RSWho to perform one browse cycle of the selected device or network. Since Refresh only performs one browse cycle, clicking Refresh multiple times may be necessary to discover everything on the network.

Right-click a supported device to select Station Diagnostics, Configure DDE Topic, or other supported services for that device.

# 4

## OPC and DDE Connectivity

This chapter describes the features of:

- OLE for Process Control (OPC)
- Dynamic Data Exchange (DDE)

### OLE for Process Control (OPC)

OPC, or OLE for Process Control, is a communication standard based on OLE technology provided by Microsoft and developed and maintained by the OPC Foundation, a coalition of industrial/manufacturing companies of which Rockwell Automation is a member. The charter of this group is to provide an industrial standard exchange mechanism between plant floor devices and client applications. RSLinx Classic is an OPC-compliant server exposing the required interfaces for an OPC client application to access data consistent with other OPC-compliant servers. The added benefit provided from RSLinx Classic is its ability to provide several DDE formats in addition to OPC.

OLE for Process Control (OPC) is designed to allow client applications access to plant floor data in a consistent manner. OPC provides many benefits:

- Hardware manufacturers only have to make one set of software components for customers to use in their applications.
- Software developers do not have to rewrite drivers because of feature changes or additions in a new hardware release.
- Customers have more choices with which to develop world class integrated manufacturing systems.

With OPC, system integration in a heterogeneous computing environment is simple. Leveraging the OLE/COM environment is possible.

RSLinx Classic is an OPC-compliant server. For more information about OPC, visit the OPC Foundation web site at [www.opcfoundation.org](http://www.opcfoundation.org). For more information on using OPC with Rockwell Software products, visit our web site at <http://support.rockwellautomation.com>.

## Dynamic Data Exchange (DDE)

Dynamic Data Exchange (DDE) is a standard inter-application communication protocol built into Microsoft Windows operating systems and supported by many applications that run under Windows. DDE takes data from one application and gives it to another application. It allows Windows programs that support DDE to exchange data between themselves.

- A DDE server is a program that has access to data and can provide that data to other Windows programs.
- A DDE client is a program that can obtain data from a server.

By specifying an application, topic, and item, a client application can exchange data with a server application.

DDE works like a conversation between two people. The people represent the different applications running under Windows, and the data they share is what they are talking about. RSLinx Classic does not know the type of data it is receiving, it only knows that a DDE link is providing the data.

For example, if you have a DDE link from RSLinx Classic to an Excel spreadsheet, Excel does not know that you are sending a counter value into a spreadsheet. All Excel sees is data.

For example, RSLinx Classic is the application name, PLC5TOPIC1 is an example topic name, and C5:0.ACC is an example item, in this case a counter accumulator in an Allen-Bradley PLC-5.

*Note: Not all applications that run under Microsoft Windows support DDE. Check with an application's manufacturer before purchasing an application for use with RSLinx Classic.*

For more information about DDE, refer to the DDE (Dynamic Data Exchange) topic in the RSLinx Classic help file.



## **DDE/OPC client connectivity**

RSLinx Classic provides connectivity for client applications using OPC or multiple DDE data formats. The OPC and AdvanceDDE interfaces provide optimized read operations by packing multiple requests from multiple clients in a single transaction. In configuring a DDE Topic, you can specify whether or not you want DDE poke operations optimized. Optimized pokes only work with PLC-5 and SLC processors.

The benefit of optimizing DDE poke operations is packing multiple updates in a single write operation, thus reducing the overall number of packets required. Operations such as downloading a recipe can take advantage of this feature.

Other DDE formats supported include FastDDE (for Wonderware clients), XL\_Table and CF\_Text to support Microsoft Office products, and other generic DDE client applications.



# 5

## Finding the Information You Need

Use this chapter to review the sources of additional information about RSLinx Classic software. This chapter helps you to find what you need efficiently by describing how to:


- Use the online help
- Access online guides
- Participate in Rockwell Software training courses
- Contact Technical Support

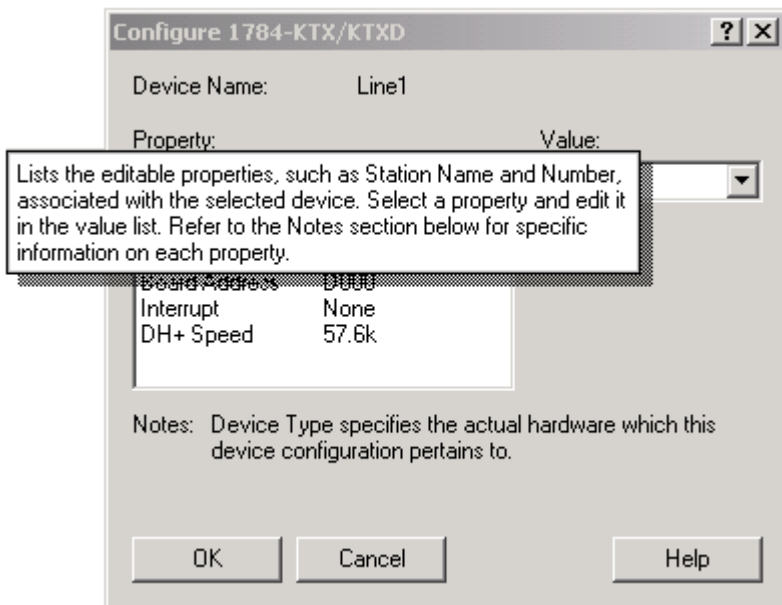
### Using the online help

RSLinx Classic online help provides general overview information, comprehensive step-by-step procedures, and context-sensitive, dialog box control definitions for working with all of the features in the software. To view online help while running RSLinx Classic:

- choose RSLinx Classic Help from the Help menu on the RSLinx Classic main window,
- click **Help** on any RSLinx Classic dialog box or property page,
- position the cursor over a control with which you want help and right-click, or
- press F1.

## Accessing help for a control or field

-  To display a definition for a control or a field, click the What's This? icon in the upper right corner of the dialog box, drag the cursor to the selected area, and then click to display the definition. In this example, the Property control was selected.







## Finding step-by-step procedures

To view a list of tasks related to the current topic, move to the What do you want to do? section at the bottom of the help window and select one of the listed tasks. The current topic is replaced with a step-by-step procedure for completing the task.

For example, from the What is a driver? help topic, if you select Add a driver under the What do you want to do? section, the procedure that describes how to add RSLinx Classic drivers displays.

### What is a driver?

A driver is the software interface to the hardware device that allows RSLinx Classic to communicate with your PLC. Configuring a software driver is the first step in establishing a DDE hot link.

Select **Communications > Configure Drivers** to display the Configure Drivers dialog box that is used for adding, editing or deleting drivers. The available hardware drivers are shown in the [Available Drivers](#) list. The presently configured drivers are displayed in the Configured Drivers list.

**Tip:** For specific click on the cont

#### Add a driver

How do I access the dialog?

1. From the Configure Drivers dialog box, select the desired driver from the Available Drivers list.
2. Click **Add New**. The configuration dialog box for that driver appears.
3. Enter the appropriate parameters for the desired driver in the configuration dialog box.
4. Click **OK** to close the configuration dialog box. The new driver now appears in the Configured Drivers list.

### What do you want to do?

[Add a driver](#)

[Edit a driver](#)

[Delete a driver](#)

[View information](#)

## Finding definitions

Within the RSLinx Classic help, blue text highlighted with an underline indicates a link to a pop-up definition or a link to a related topic. For example, in the Dynamic Data Exchange help topic, [application](#), [topic](#), and [item](#) are pop-up definitions, and [DDE link](#) is a link to a related topic.

### Dynamic Data Exchange (DDE)

Dynamic Data Exchange (DDE) is a standard inter-application communication protocol built into Microsoft Windows. DDE takes data from one application and gives it to another application. DDE is supported by many applications that run under Windows. DDE takes data from one application and gives it to another application.

- A **DDE server** is a program that has access to data and can provide that data to other Windows programs.
- A **DDE client** is a program that can obtain data from a server.

By specifying an [application](#), [topic](#), and [item](#), a client application can exchange data with a server application. DDE works like a conversation between two people. The people represent the different applications that are talking about the data.

Applications using DDE to talk to RSLinx Classic do not care what kind of data they are getting. All that matters is providing data. What that data is and how it will be used is immaterial to the receiving application. For example, if you have a DDE link from RSLinx Classic to an Excel spreadsheet, Excel does not know what the data is. All Excel sees is data.

For example, **RSLINX** is the application name, **PLC5TOPIC1** is an example topic name, and **C5:0.A1** is an example item name.

**Tip:** Not all applications that run under Microsoft Windows support DDE. Check with an application's documentation for use with RSLinx Classic.

#### What do you want to do?

[Set up a DDE conversation](#)

[Read data collection tips](#)

[Configure network DDE](#)

[Read about polled and unsolicited mode](#)



## Accessing online guides

You can gain immediate access to product documentation through the online guides included with RSLinx Classic. The online guides include this Getting Results Guide, as well as any reference guides, in an electronic book format. The online guides are included in a portable document format (PDF) on your RSLinx Classic CD. These files must be viewed using the Adobe Acrobat Reader software, which you can download for free from the Adobe website ([www.adobe.com](http://www.adobe.com)).

## Training

One of the best ways to increase your proficiency at using Rockwell Software products is to attend a Rockwell Software training program. Our training programs can help you master the basics and show you how to unleash the full potential of our software.

We offer a wide range of training programs, from regularly scheduled classes conducted at Rockwell Software facilities, to custom-tailored classes conducted at your enterprise. The size of each class is kept small intentionally to maximize student engagement.

If you would like more information about our training programs, visit the Rockwell Software site on the World Wide Web or contact the Rockwell Software Training Coordinator. Our World Wide Web address and telephone numbers appear on the inside front cover of this document.

*Note: For more information on Rockwell Software training, select Help > Support and Training from within RSLinx Classic*

## Technical support

If you cannot find answers to your questions in the *Getting Results with RSLinx Classic* guide, the online help, or the online guides, you can call Rockwell Software Technical Support at the numbers listed on the inside front cover of this guide. The technical support staff is available Monday through Friday from 8 A.M. to 5 P.M. Eastern Time, except holidays. You can also access the Rockwell Software Online Support Library from the web site listed on the inside front cover of this guide.

## When you call

When you call, you should be at your computer and prepared to give the following information:

- product serial numbers
- product version number
- The product serial numbers and version number can be found in the software by selecting **Help > About RSLinx Classic**.
- hardware you are using
- exact wording of any errors or messages that appeared on your screen
- description of what happened and what you were doing when the problem occurred
- description of how you attempted to solve the problem



# Activation

RSLinx Classic 2.54.00 (CPR 9 Service Release 1) supports two kinds of activation-- FactoryTalk and EVRSI.

*Notes: If you are a new user, you will need to activate your software using FactoryTalk Activation because RSLinx Classic no longer ships with a physical "master disk" for activating software. For more information, read the 'Activate RSLinx Classic with FactoryTalk Activation' section of this appendix. However, if you are a current user upgrading to RSLinx Classic 2.54.00, you can continue using EVRSI to activate your software. For more information, read the 'Activate RSLinx Classic with EVRSI' section of this appendix.*

*EvRSI activation has been replaced by FactoryTalk Activation in the current release. If you are using EvRSI activation, please contact your local Rockwell Automation Sales office or Rockwell Automation Technical Support for information on migrating your activations to FactoryTalk Activation. For Rockwell Automation Technical Support in the U.S. call 1 (440) 646-3434. Outside the U.S. see <http://www.rockwellautomation.com/locations/>.*

## Grace period

In RSLinx Classic v2.52.00 (CPR 9) and later, the software supports a seven day activation grace period when a valid activation is not found. During grace period:

- When the software is started, a message is logged to the FactoryTalk Diagnostic log every four hours until a valid activation is found.
- RSLinx Classic can be started an unlimited number of times. If the grace period ends and a valid activation has not been found, RSLinx Classic Lite is started.

*Note: If RSLinx Classic is unable to successfully obtain valid activations (for example, a network failure occurs), the software will attempt to run in grace period for up to seven days.*

## Activate RSLinx Classic with FactoryTalk Activation

The type of FactoryTalk Activation RSLinx Classic 2.54.00 (CPR 9 Service Release 1) supports is called concurrent activation. A concurrent activation allows multiple computers across a network to use Rockwell Software products at the same time. There are two kinds of concurrent activations:

- **floating activations** - activations that "float" from an activation server to any computer on a network that needs them.
- **borrowed activations** - activations that are retrieved from a server for a specific period of time before expiring and returning automatically to the pool of available activations on the server.

*Notes: You can only borrow RSLinx Classic v2.54.00 activations if you are running RSLinx Classic as an application. If you are running RSLinx Classic as a service, you cannot borrow activations.*

*RSLinx Classic v2.53.00 (CPR 9) and earlier supported local "node-locked" activation and mobile "node-locked" activation.*

## How to activate RSLinx Classic

To activate your copy of RSLinx Classic, perform the following steps:

1. Install the FactoryTalk Activation Client available from the Optional Steps screen of the Install program.
2. Once FactoryTalk Activation Client is installed, select **Start > Programs > Rockwell Software > FactoryTalk Activation > FactoryTalk Activation Tool** to launch the FactoryTalk® Activation Tool.
3. Click the **Get Activations** tab.
4. Click the **Open Activation Wizard** button. Follow the instructions in the wizard. For more information on using the FactoryTalk® Activation Tool, see the FactoryTalk Activation Tool online help.

## Finding more information about FactoryTalk Activation

For help with FactoryTalk Activation at any point, you can click:

- the Help button on any FactoryTalk Activation Tool dialog or FactoryTalk Activation Transfer Tool dialog
- the Help link on the Rockwell Software Activation website:  
<http://licensing.software.rockwell.com>
- View How to Activate Rockwell Software Products on the Required Steps of the Install program

If you cannot connect to the Internet, call Technical Support for help creating an activation file from an e-mail or a fax.

Phone: 440-646-3434 in North America. Outside of North America, call your local support organization.



## Activate RSLinx Classic with EVRSI

Rockwell Software's products are copy-protected. Only a computer with access to the activation key can run the software. The key is located in an activation file, which is located on the Master disk supplied with the RSLinx Classic product. The activation file contains one activation key per product. Each key contains one or more licenses depending on how many copies of the product you have purchased.

*Note: Store your Master disk in a safe place. If your activation becomes damaged, the Master disk may be the only means to run your software in an emergency.*

During the setup process, the setup program gives you the opportunity to move the activation file from the Master disk to the root directory of the drive on which you're installing the software.

When you launch RSLinx Classic, the software first checks your local hard drives, then network hard drives, and finally local floppy drives for activation. If the system fails to detect either the activation file or the Master disk, your software reverts to the RSLinx Classic Lite version.

*Note: Systems attached to extensive networks can take quite a while to search for activation files on all available drives. You can use the CHECKDRIVES environment variable to specify and/or limit the drives your software checks for activation files and to specify the order in which they are checked. Refer to the activation utilities online help file by selecting Help > Copy Protection.*

## How to activate RSLinx Classic

Depending on your needs, you can activate RSLinx Classic from any of the following:

**Hard drive.** The activation key resides on your computer's hard disk. Use this method if you will typically use RSLinx Classic on only one computer. This is the default method if you activate RSLinx Classic during installation. To run RSLinx Classic on a different computer, move the activation key back to the Master disk, and then to the hard drive of the new computer.

**Diskette drive.** The activation key resides on a floppy disk (activation disk). Use this method if you will typically use RSLinx Classic on more than one computer, for example, if you want to run RSLinx Classic on a desktop computer at some times and a portable computer at others.

**Network drive.** The activation keys reside on a network drive. Use this method if you have purchased multiple licenses of the software and want several users to be able to activate the software over a network. Refer to the online help for instructions on moving activation to a network drive (refer to the "Finding more information about activation" section in this chapter to access online help).

## Protecting your activation files



---

Certain anti-virus software packages, such as Norton Anti-virus, can corrupt the activation files. Configure your anti-virus software to avoid checking the files EVRSI.SYS and 386SWAP.PAR.

---

To avoid damaging your activation files, do not perform the following operations with activation files on the hard drive.

- Restore from backup
- Upgrade the operating system
- Compress or uncompress the hard drive

Defragmentation utilities will not harm activation files.

Before running any type of utility that may modify the structure or organization of the hard drive, remove activation from the hard drive:

1. Use the Move Activation utility (EvMove) to move activation files from the hard drive to an activation disk.



---

Do not use the the Move Activation utility if Rockwell Software products are currently running. Ensure all software programs are closed before initiating the EvMove utility.

---

Run EVMOVE.EXE from your hard drive (located in C:\Program Files\Rockwell Software\RSUtil if you accepted the default directory location during installation).

2. Perform the hard disk operation.
3. Move the activation files back to the hard drive.



---

You must use the move utility, EvMove, to move activation files. Attempts to copy, move or e-mail an activation file by other means will damage the file.

---





## **RUNNING THE ACTIVATION UTILITIES**

The utilities for moving and resetting activation are called EvMove and Reset respectively. Reset is used when an activation file has been damaged. The EVMOVE.EXE and RESET.EXE files are located on your hard drive (located in C:\Program Files\Rockwell Software\RSUtil if you accepted the default directory location during installation). To run these programs, select **Start > Programs > Rockwell Software > Utilities > Move Activation** or **Reset Activation**.

## **Some common questions**

Following are some common problems that people encounter with activation and their solutions.

### **MY ACTIVATION FILES WERE DAMAGED. WHAT SHOULD I DO?**

If you have lost the activation because the activation file is damaged, you need to reset activation. Follow the Reset Codes instructions on the Rockwell Software Technical Support web page, or call the technical support telephone number. The web page and telephone number are both listed on the inside front cover of this guide.

If you cannot obtain a reset code immediately, follow these instructions to use the Master disk to activate the software as a temporary solution.

To use the Master disk to activate software:

1. Set the KEYDISK environment variable to TRUE. (Please refer to the online help.)
2. Insert your Master disk in the floppy drive.
3. Run your software as usual. Your software will find the activation on the Master disk.

### **I ACCIDENTALLY DELETED THE SOFTWARE DIRECTORY ON MY HARD DRIVE. DO I NEED TO CALL ROCKWELL SOFTWARE FOR REPLACEMENT ACTIVATION FILES?**

No. Deleting the program files does not delete your activation. The activation files are not stored in the program directory; they are located in the root directory. Your activation files will not be lost unless you format the hard drive, tamper with hidden files in the root directory, or perform certain other hard drive operations (refer to the “Protecting your activation files” section in this chapter for more information).

To get the software running again, simply reinstall the software, but do not move the activation when given the opportunity.

## WHY CAN'T I MOVE ACTIVATION TO A NEW FLOPPY DISK ON A WINDOWS NT SYSTEM?

It has to do with a disk modification that NT does not allow. If you have access to a machine with a different Windows operating system, you can create a disk that will work under NT. Format a floppy and move any activation file to it under Windows XP, 2000, Me, or 98. (You can move the activation back off the disk if you want to keep it where it was.) Then take that disk to your Windows NT machine and move the activation to it.

## Finding more information about activation

The online help (COPYPROT.HLP) provides more extensive information on activation including subjects such as:

**KEYDISK.** Set this environment variable to tell your computer to look for activation on floppy drives

**CHECKDRIVES.** Specify which drives to search for activation

**network activation.** Move activation to a network server to allow multiple users access to the activation

**moving activation.** See detailed instructions for moving activation

**resetting activation.** See detailed instructions for using the Reset utility to repair a damaged activation file

**troubleshooting.** Look up error messages, get problem-solving suggestions

You can access online help:

- from the **Help** button on one of the EvMove or Reset dialog boxes.
- from RSLinx Classic by selecting **Help > Copy Protection** from the main menu.
- without running either RSLinx Classic or the activation utilities. From the Windows Start menu, select **Programs > Rockwell Software > Utilities > Activation Help** (if you accepted the default directory location during installation).



# Secure RSLinx Classic with FactoryTalk Security

FactoryTalk Security™ is intended to improve the security of your automation system by limiting access to those with a legitimate need. FactoryTalk Security authenticates user identities and authorizes user requests to access a FactoryTalk-enabled system. These security services are fully integrated into the FactoryTalk Directory and are included as part of the FactoryTalk Services Platform that installs with many products.

For more information on how to use security services, please refer to FactoryTalk Security's Online help.

## How do I set up security in RSLinx Classic?

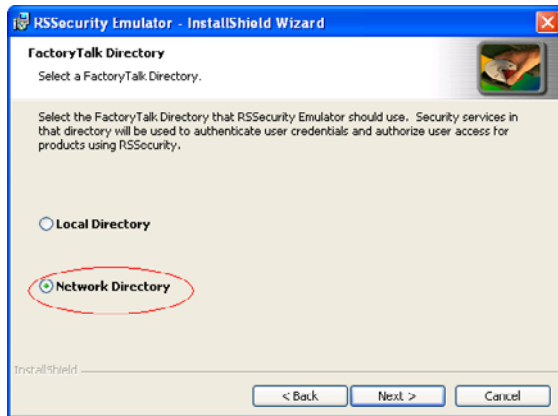
RSLinx Classic 2.54.00 (CPR 9 Service Release 1), along with supporting RSSecurity, also supports FactoryTalk Security. FactoryTalk Security™ is intended to improve the security of your automation system by limiting access to those with a legitimate need. FactoryTalk Security authenticates the identities of users and authorizes user requests to access a FactoryTalk-enabled system against a set of defined user accounts and access privileges held in the FactoryTalk Directory. For more information on FactoryTalk Security, read the 'About FactoryTalk Security' topic located in RSLinx Classic's Online Help. The following table explains the steps you would need to perform to implement one of the two security mechanisms (FactoryTalk Security and RSSecurity) supported by RSLinx Classic.

If you are...	Do this...
a user who wants to: ■ use FactoryTalk Security, and ■ has never configured security using RSSecurity	1. Install FactoryTalk Services Platform from the RSLinx Classic Optional Steps Install screen. (During the FactoryTalk Services Platform install you configure the FactoryTalk Directory.) 2. Install RSSecurity Emulator from <b>Start &gt; Programs &gt; Rockwell Software &gt; FactoryTalk Tools &gt; RSSecurity Emulator</b> .

If you are...

Do this...

***Note:** During RSSecurity Emulator install, the 'FactoryTalk Directory' screen appears (see the following figure) where you will be prompted to select the FactoryTalk Directory (Network or Local) that RSSecurity Emulator should use. At this step, be sure to make a note of the directory you choose -- you will require this information when adding security policies to FactoryTalk Directory in step 5.*



3. Install RSLinx Classic from RSLinx Classic Required Steps Install screen.

4. While running RSLinx Classic's installation wizard, the Security Configuration Selection screen appears. On this screen, select the 'Enable Security' option.

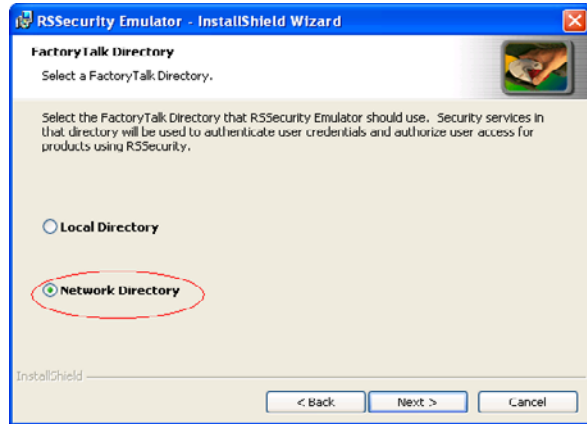


If you are...	Do this...
	<p>5. Click <b>Next</b> to finish RSLinx Classic install.</p> <p>6. Open FactoryTalk Administration Console from <b>Start &gt; Programs &gt; Rockwell Software &gt; FactoryTalk Administration Console</b> to add user accounts and set security settings to secure RSLinx Classic.</p> <p><b>Note:</b></p> <ul style="list-style-type: none"> <li>■ For more information on how to add user accounts, read the <i>Add a user account</i> topic in FactoryTalk Administration Console help, located at <b>Manage FactoryTalk-enabled systems &gt; Log on and configure security &gt; Configure security &gt; How To &gt; Work with user accounts &gt; Add a user account</b>.</li> <li>■ For more information on how to secure RSLinx Classic's features, read the <i>Secure Product Features</i> topic in FactoryTalk Security help, located at <b>Configure Security &gt; How to &gt; Set up product policies &gt; Secure product features</b>.</li> <li>■ For more information on what you can secure in RSLinx Classic, read the <i>What can I secure in RSLinx Classic</i> topic in RSLinx Classic Online help, located at <b>How to &gt; Secure RSLinx Classic with FactoryTalk &gt; What can I secure in RSLinx Classic</b>.</li> </ul>
	<p>7. Open RSLinx Classic from <b>Start &gt; Programs &gt; Rockwell Software &gt; RSLinx &gt; RSLinx Classic</b>, and select <b>Security &gt; Set Security User</b> from the main menu. In the New User dialog box, enter the username and password of the user you created in FactoryTalk Administration Console in step 6, and click <b>OK</b>.</p> <p><b>Note:</b> Because access to features in RSLinx Classic is governed by the permissions you set for a user in FactoryTalk Administration Console, some features out of the 13 securable features in RSLinx Classic may be inaccessible (for example, if the user you entered in step 7 does not have the appropriate permission).</p> <p>This completes the security setup for RSLinx Classic.</p>

If you are...	Do this...
a user who wants to:  ■ use FactoryTalk Security, as well as  ■ import an existing RSSecurity Configuration into the FactoryTalk Directory	<ol style="list-style-type: none"><li>1. Install FactoryTalk Services Platform from the RSLinx Classic Optional Steps Install screen. (During the FactoryTalk Services Platform install you configure the FactoryTalk Directory.)</li><li>2. Launch the Security Config Explorer by selecting <b>Start &gt; Programs &gt; Rockwell Software &gt; Security Server Network Edition &gt; Security Config Explorer</b>.</li><li>3. Locate the RSSecurity Configuration (*.bak) file, and select <b>File &gt; Export</b> to backup the *.bak file.</li><li>4. Close the Security Config Explorer.</li><li>5. Uninstall RSSecurity Server/Client (whichever is installed on this machine) from <b>Start &gt; Settings &gt; Control Panel &gt; Add/Remove Programs</b>.</li><li>6. Install RSSecurity Emulator from <b>Start &gt; Programs &gt; Rockwell Software &gt; FactoryTalk Tools &gt; RSSecurity Emulator</b>.</li></ol> <p><i><b>Note:</b> During RSSecurity Emulator install, the 'FactoryTalk Directory' screen appears (see the following figure) where you will be prompted to select the FactoryTalk Directory (Network or Local) that RSSecurity Emulator should use. At this step, be sure to make a note of the directory you choose — you will require this information when importing the .bak file into the FactoryTalk Directory in step 10.</i></p>

If you are...

Do this...



7. Install RSLinx Classic from RSLinx Classic Required Steps Install screen.

8. While running RSLinx Classic's installation wizard, you will see the Security Configuration Selection screen. On this screen, select the 'Enable Security' option.



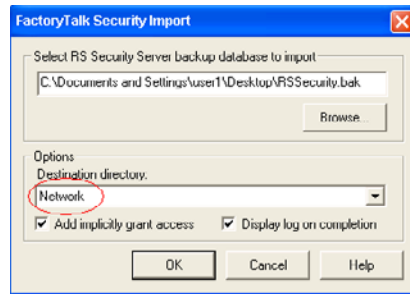
**If you are...**

**Do this...**

9. Click **Next** to continue with the installation.

10. Import RSSecurity Server database by launching **Start > Programs > Rockwell Software > FactoryTalk Tools > Import RSSecurity Configuration**.

***Note:** While running the Import RSSecurity Configuration utility, you will see the 'FactoryTalk Security Import' dialog box (see the following figure). In the 'Destination' listbox on this dialog box, be sure to import the .bak file to the directory where you installed the Emulator (see step 7). (Selecting the default option in the destination field stores your file in the Network directory.)*



11. Open RSLinx Classic, and select **Security > Set Security User** from the main menu. In the New User dialog box, enter the username (domain name\username) and password of the RSSecurity user.

***Note:** If you do not remember the usernames of the users that existed in your old RSSecurity setup, perform the following steps:*

*a. Launch FactoryTalk Administration Console by selecting **Start > Programs > Rockwell Software > FactoryTalk Administration Console**.*

*b. In the Explorer pane, expand the FactoryTalk Local or Network Directory tree, and then expand the Systems folder until the Users folder is visible.*

*c. In the Users folder, the users who have domain associated with their usernames (for example, na\Bob) are your RSSecurity users.*

***Note:** Because access to features in RSLinx Classic is governed by the permissions you set in the security server, some features out of the 13 securable features in RSLinx Classic may be inaccessible (for example, if the user you entered in step 11 does not have the appropriate permission).*

This completes the security setup for RSLinx Classic.





## What can I secure in RSLinx Classic?

The following table explains the features you can restrict access to in RSLinx Classic. For example, you might restrict the ability to shut down the RSLinx Classic service to a small group of users, to prevent parts of your automation system from going down at runtime.

**Note:** If you selected *Network Directory* during the *RSLinx Classic security setup procedure*, you must use *FactoryTalk Security* to secure the following list of features. For more information, please contact your local Rockwell Automation distributor.

Securable feature	Description
Clear DDE/OPC Event Log	Displays information on any DDE/OPC error messages logged while running RSLinx Classic with DDE/OPC compliant programs.
Configure CIP Options	Administers how PCCC requests that use the CIP protocol are sent over networks.
Configure Client Applications	Maps configured and running RSLinx Classic drivers to legacy INTERCHANGE C API, as well as displays the link identifier of the virtual network maintained by RSLinx Classic for the use of Client Applications in the virtual link unsolicited messaging model.
Configure ControlLogix Gateway	Provides you with information about the modules in your ControlLogix Gateway.
Configure DDE/OPC Topic	Configures DDE/OPC topic.
Configure Drivers and Shortcuts	Configures (add, edit, or delete) drivers and shortcuts that allow RSLinx Classic to communicate with your PLC, as well as provide quick access to specific networks.
Configure Gateway	Allows you to enable the RSLinx Classic Gateway.
Configure Network Properties	Allows you to configure network properties.
Edit DDE/OPC Project	Allows you to edit your DDE/OPC project.
Edit Options	Displays the options dialog box which contains the General and DDE tabs.
Reset Station Diagnostic Counters	Clears the counters in the station diagnostic screens.
Shutdown	Shuts down RSLinx Classic.
View NT Event Log	Records important system occurrences such as RSLinx Classic drivers successfully starting and stopping.

## Considerations when using RSLinx Classic with FactoryTalk Security

Keep the following in mind when using RSLinx Classic with FactoryTalk Security:

### NETWORK/LOCAL DIRECTORY

The FactoryTalk Services Platform can install two completely separate and independent FactoryTalk Directories: a Local Directory and a Network Directory. User accounts, passwords, and security permissions to securable features are completely separate and cannot be shared between the Network Directory and the Local Directory. Configuring any of these items on one directory does not configure them on the other. Similarly, changing the password to a user account in one directory does not change the password the other directory, even if the account has the same name in both directories.

When configuring RSLinx Classic to work in one of the two directories, please keep the following in mind :

- RSLinx Classic's security policies and RSSecurity Emulator must be installed in the same directory (either Local or Network).
- If you configured RSLinx Classic to work in the Network Directory, you must use FactoryTalk Security to administer centralized security across the network.
- If you configured RSLinx Classic to work in Local Directory and want to use FactoryTalk Security, you can administer security only on a single computer.



## RESET NETWORK TREE

When RSLinx Classic is reinstalled, all security settings that were previously configured for networks and devices are lost. You must redefine these security settings in the Networks and Devices tree, or in RSWho. For more information, read the Network and Devices are not displayed correctly topic in FactoryTalk Security's help, located at **Configure security > Troubleshooting security > Network and Devices are not displayed correctly**.

## MISCELLANEOUS

Keep the following additional FactoryTalk Security considerations in mind:

- If you did not check 'enable security' option during RSLinx Classic install, but want to enable security now, you will need to uninstall and then reinstall RSLinx Classic.
- Every time you are in RSLinx Classic, be sure to verify that the Username displayed in the Current Security User text box of the Set Security dialog box (**Security > Set Security User**) is correct. If it is incorrect, enter the new Username and Password, and click **OK**.



# Glossary

**Activation disk** — Any disk (floppy or hard) containing an activation file. An activation disk can be used to activate the software. This is different from a key disk (Master Disk) in that at least one license of the software must be available on the activation disk to activate the software.

**Activation file** — A hidden, read-only, system file that “activates” a Rockwell Software product. The software will run only if your system can find the correct activation file.

**Activation key** — Activation files contain a database of activation keys. Each key is particular to a certain product and must be accessible on a local or remote drive for that product to run.

**Driver** — The software interface to the hardware device that will be used to communicate between RSLinx Classic and your processor.

**Dynamic Data Exchange (DDE)** — A form of inter-process communication. When two or more programs that support DDE are running simultaneously, they can exchange information and commands.

**Key disk** — A floppy disk that can be used to activate the software even if that disk contains zero licenses. The Master Disk is the only key disk. This differs from an activation disk in that an activation disk must contain at least one license.

**License** — Authorization to use a specified number of instances of software. A product’s activation key contains a license for each copy of the software you have purchased. For example, if you bought seven copies of RSLinx Classic, then the RSLinx Classic key on the Master Disk contains seven “licenses” of RSLinx Classic. You can move the activation file for RSLinx Classic to seven different computers.

**Links** — The data path established for one or more channels between two or more stations. DDE links can be hot, warm, or cold.

**Master disk** — This disk is supplied with the software. It contains a database of keys in an “activation file” that enables the software to run. Be sure to store your Master Disk in a safe place. If your activation file becomes damaged, the only way you can run your software (until the activation is reset) is with your Master Disk.

**OPC** — Provides an industry-standard mechanism to communicate and exchange data between clients and servers using OLE technology.

**Packet** — The transmission unit exchanged at the network layer.

**Poke** — DDE's version of a write.

**Read** — To acquire data from somewhere (memory, an output, another station).

**Topic** — Represents a specific path to a processor.

**Write** — To load data into somewhere (memory, an output, another station).

# Index

## A

- activation ■ 31
  - EVRSI ■ 33
    - activate ■ 33
    - damaged ■ 35
    - moving ■ 36
    - network ■ 36
    - removing ■ 34
    - resetting ■ 36
    - troubleshooting ■ 36
    - utilities ■ 35
  - FactoryTalk
    - activate ■ 31
- anti-virus software ■ 34
- application workspace ■ 13
- autorun ■ 16

## C

- CHECKDRIVES ■ 33, 36
- classes ■ 29
- close ■ 10
- communications device ■ 15
- compressing the hard drive ■ 34
- configure a driver ■ 6
- configure a topic ■ 7
- context-sensitive help ■ 12, 25
- control definitions ■ 25
- Control menu ■ 10
- copy a link ■ 8

## D

- defragmentation utilities ■ 34
- deleting the software directory ■ 36
- diagnostics ■ 12
- directory location ■ 17
- document conventions ■ 2
- documentation set ■ 1
- driver configuration ■ 6
- Dynamnic Data Exchange ■ 22

## E

- electronic book format ■ 2, 29
- ethernet card ■ 15
- EvMove ■ 34
- EVRSI ■ 33

## F

- FactoryTalk Activation ■ 31
- FactoryTalk Administration Console ■ 39
- FactoryTalk Security user ■ 37
- FactoryTalk Services Platform ■ 37
- FactoryTalk View version ■ 5
- feedback ■ 2

## G

- Gateway version ■ 5
- grace period ■ 31

## H

- hard drive space ■ 15
- hardware requirements ■ 15

## I

- install
  - FactoryTalk Services Platform ■ 37
  - RSLinx Classic ■ 15
  - RSSecurity Emulator ■ 37
- intended audience ■ 1

## K

- KEYDISK ■ 36

## L

- license ■ 15
- Lite version ■ 4
- Local Directory ■ 44

## M

- maximize ■ 10
- memory ■ 18
- menu bar ■ 11
- minimize ■ 10
- mouse ■ 15
- move ■ 10, 43
- moving EVRSI activation ■ 36

## N

- Network Directory ■ 43
- network EVRSI activation ■ 36

## O

- OEM version ■ 4
- OLE for Process Control ■ 21
- online guides ■ 29
- online help ■ 1, 15, 25

## P

- paste a link ■ 9
- pointing device ■ 15
- pop-up definition ■ 28
- product
  - serial numbers ■ 30
  - version number ■ 30

## Q

- quick start ■ 6

## R

- RAM ■ 15, 18
- registration information ■ 17
- reinstalling DOS ■ 34
- related topic ■ 28
- release notes ■ 15
- removing
  - EVRSI activation ■ 34
  - programs from computer ■ 17

## requirements

- hardware ■ 15
- software ■ 16
- resetting EVRSI activation ■ 36
- restore ■ 10, 37, 43
- restoring from backup ■ 34
- RSlinX Classic icon ■ 10
- RSlinX Classic types ■ 3
- RSSecurity Emulator ■ 37
- RSSecurity user ■ 40

## S

- security ■ 37
  - Add user accounts ■ 39
  - considerations ■ 44
  - enable security option ■ 45
  - FactoryTalk Administration Console ■ 39
  - FactoryTalk Security user ■ 37
  - FactoryTalk Services Platform ■ 37
  - Local Directory ■ 44
  - Network Directory ■ 43, 44
  - Network Tree ■ 45
  - RSSecurity Emulator ■ 37, 44
  - RSSecurity user ■ 40
  - securable features ■ 43
  - Set Security dialog box ■ 45
  - set up security ■ 37
- serial number ■ 17
- serial numbers ■ 30
- Single Node version ■ 4
- size ■ 10, 43
- software license agreement ■ 17
- software requirements ■ 16
- standard setup ■ 17
- starting RSNetWorx for DeviceNet ■ 15, 18
- status bar ■ 13
- step-by-step procedures ■ 25, 27
- support ■ 29
- support library ■ 29
- SVGA graphics adapter ■ 15
- system requirements ■ 15



**T**

- tasks ■ 27
- technical support ■ 29
- title bar ■ 10
- toolbar ■ 12
- topic configuration ■ 7
- training ■ 29
- troubleshooting
  - EVRSI activation ■ 36
  - installation ■ 18
- types of RSLinx Classic ■ 3

**U**

- uncompressing the hard drive ■ 34
- updating an existing installation ■ 17
- upgrading the operating system ■ 34

**V**

- version numbers ■ 30

**W**

- What's This? help ■ 26
- Windows
  - 2000 ■ 16
  - 2003 ■ 16
  - Vista ■ 16
  - XP ■ 16

